

# Installation Manual

KIA RIO 5DR  
KIA-RIO-5-B-18



## COMPONENTS INCLUDED



## FIXING CLIPS



CL-M12 x 2



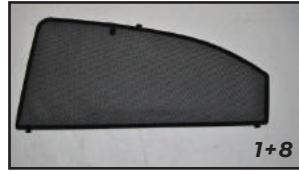
CL-M13 x 4



# Side Shade Installation

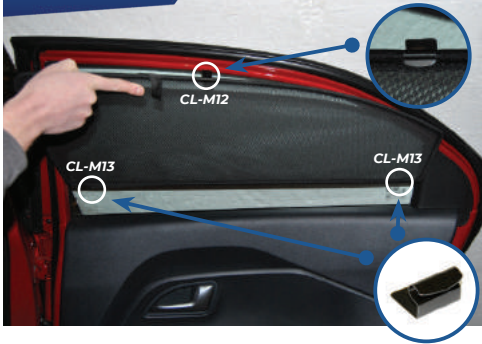
KIA RIO 5DR  
KIA-RIO-5-B-18

COMPONENTS NEEDED:



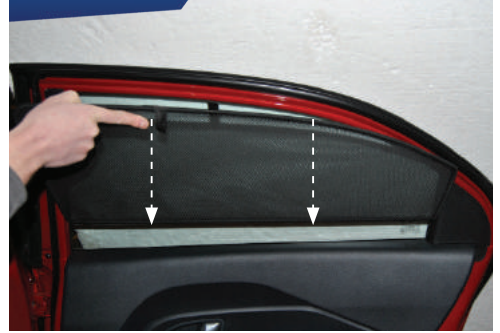
## STEP #1

ATTACH CLIPS ON SHADE EDGES



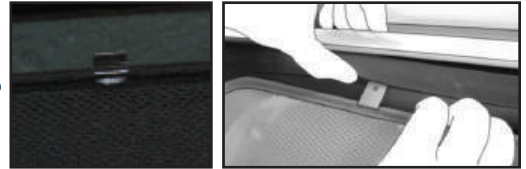
## STEP #2

POSITION THE SIDE SHADE



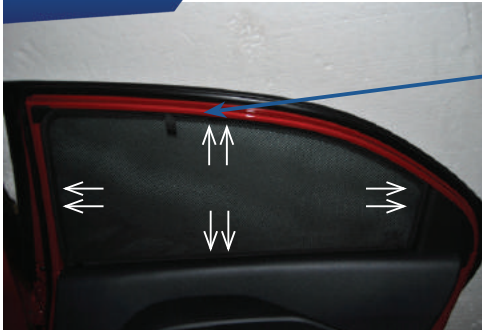
## STEP #3

INSERT CLIPS INSIDE WEATHERSTRIP



## STEP #4

ENSURE SECURELY FITTED IN PLACE



**CAR**  
SHADES